

## TOPICAL FLUORIDE APPLICATION



# PIT & FISSURE SEALANT



**BEFORE**



**AFTER**

# ORAL PROPHYLAXIS

## PRE OPERATIVE

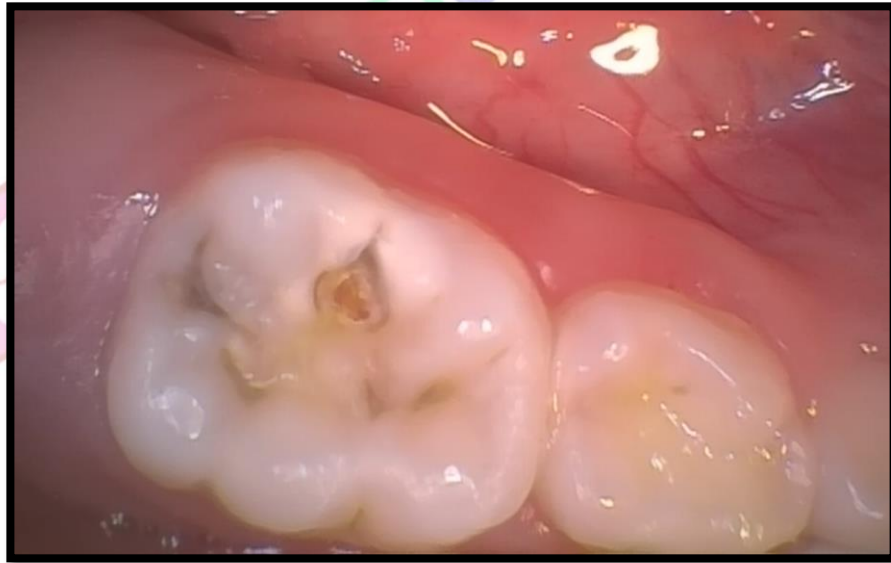


## POST OPERATIVE

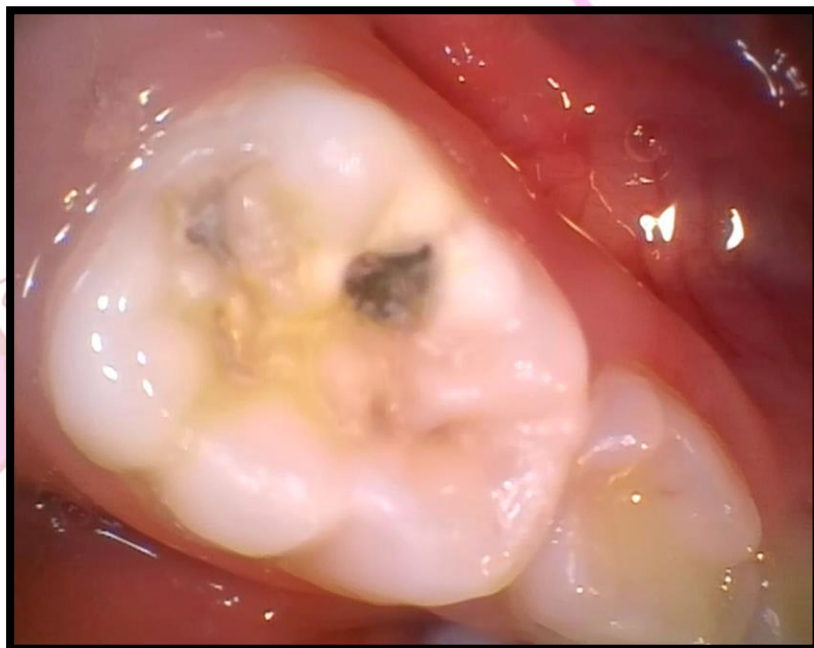


# SILVER DIAMINE FLUORIDE

## PRE OPERATIVE 85



## POST OPERATIVE 85



# *High strength Posterior GIC*

**PRE OPERATIVE 85 84 74 75**



**POST OPERATIVE 85 84 74 75**

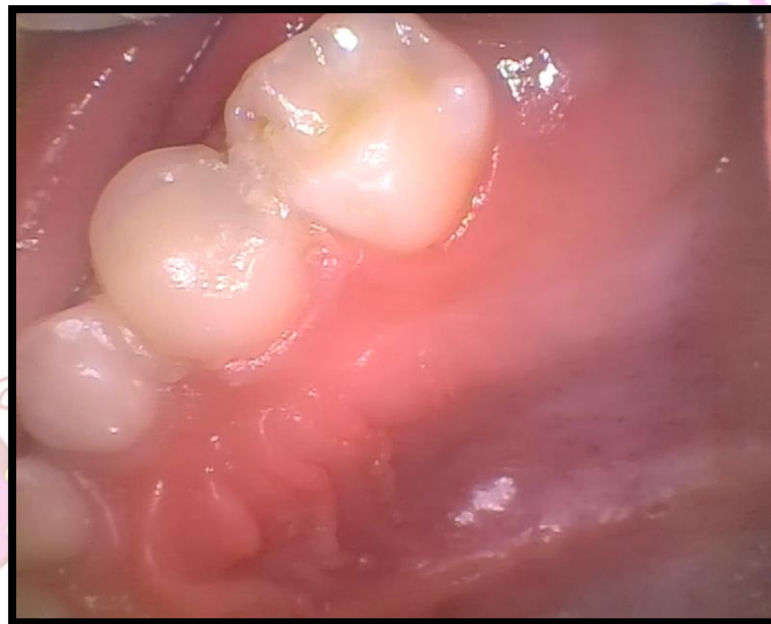


# *Light Cure Composite Restoration*

**PRE OPERATIVE 64**



**POST OPERATIVE 64**



# *Strip Crowns*



**PRE OPERATIVE 61**



**POST OPERATIVE 61**



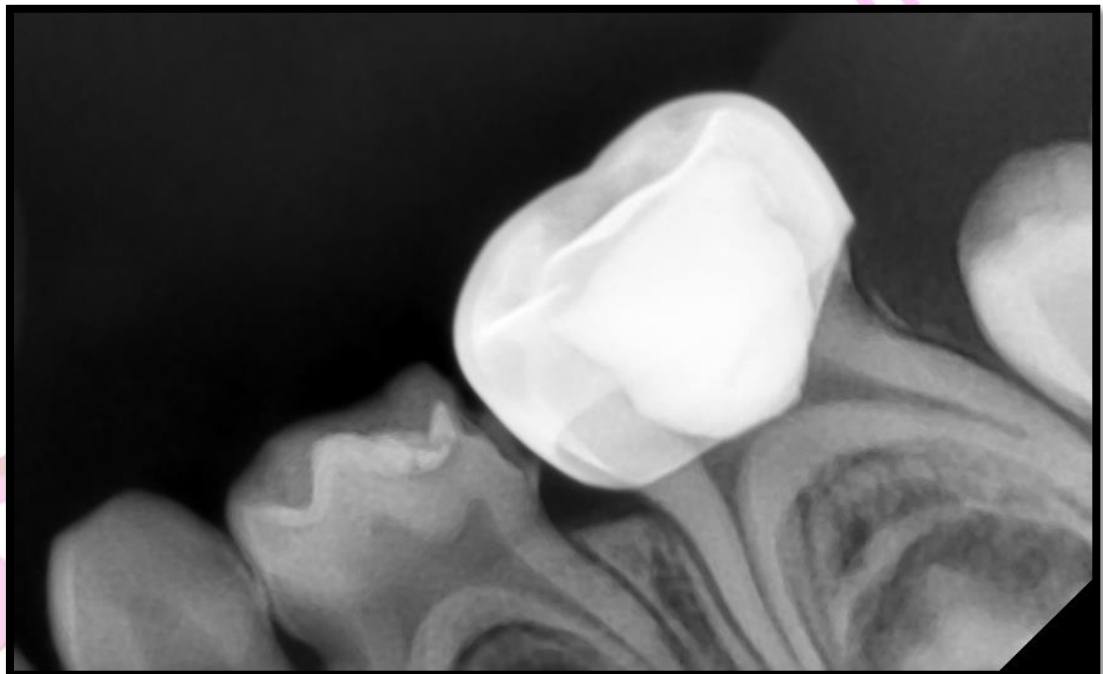
**PRE OPERATIVE**  
**52 51 61 62**



**POST OPERATIVE**  
**52 51 61 62**

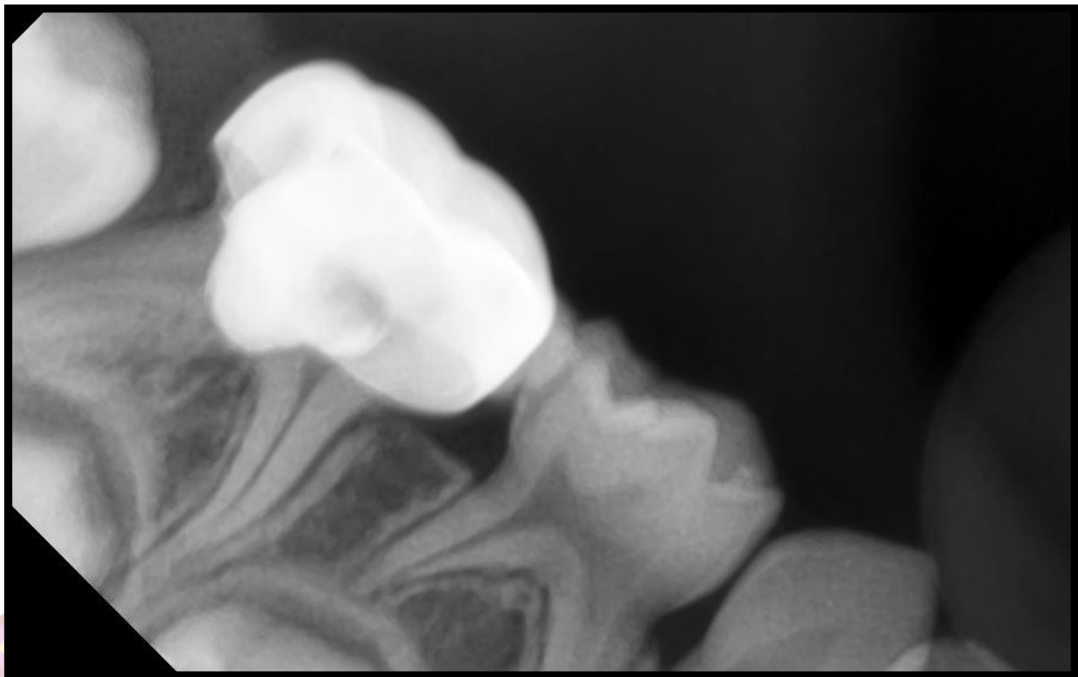
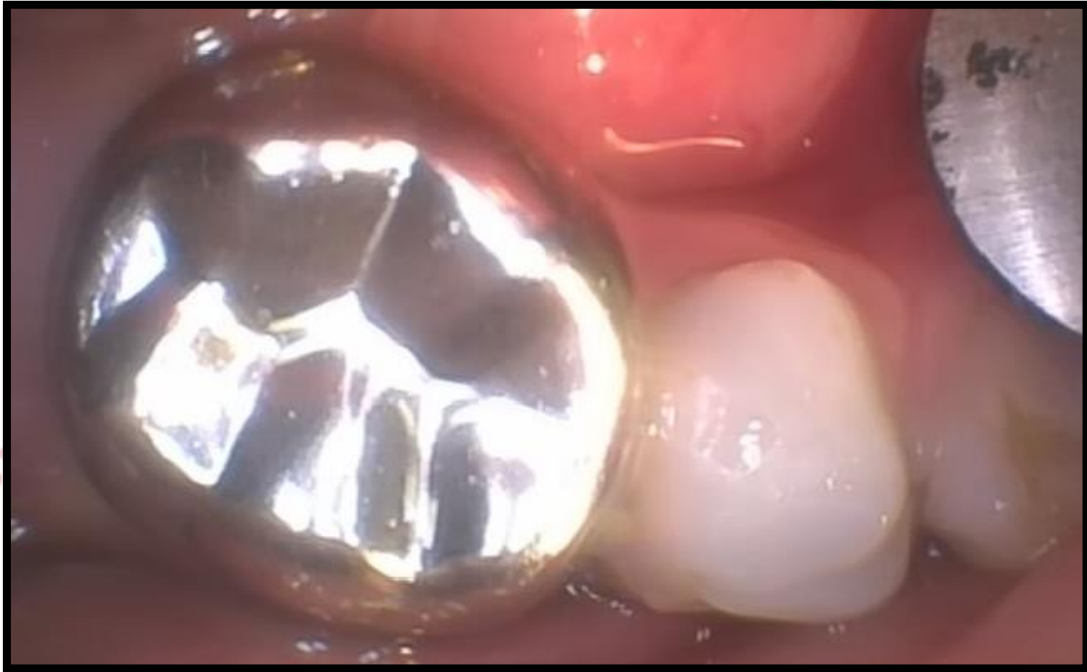
# *Stainless Steel Crowns*

SSC 75



SSC 85

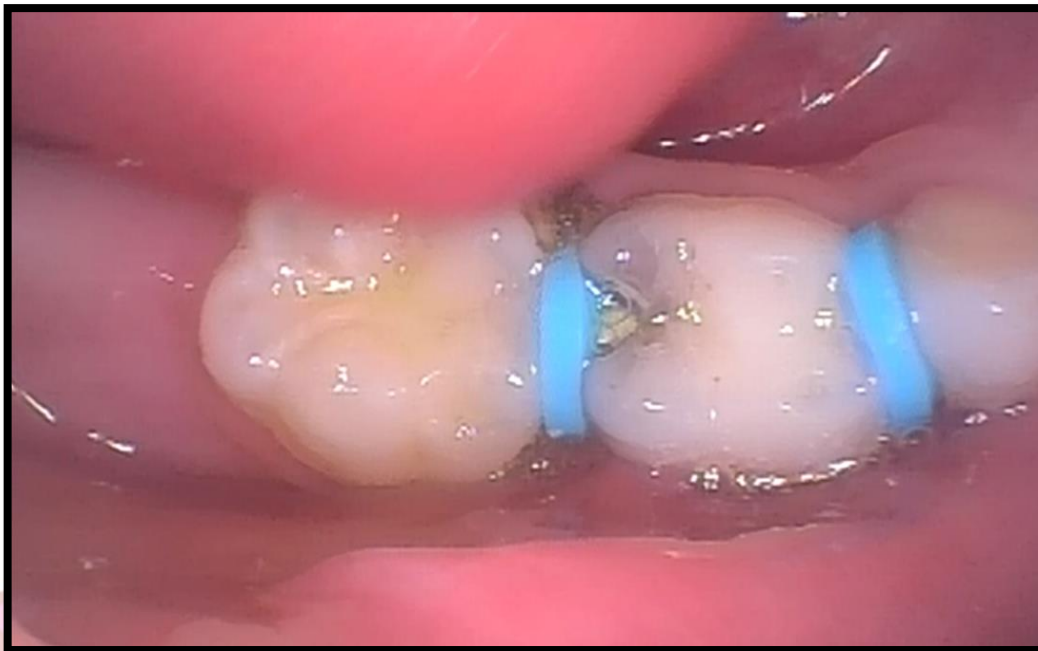
Centre



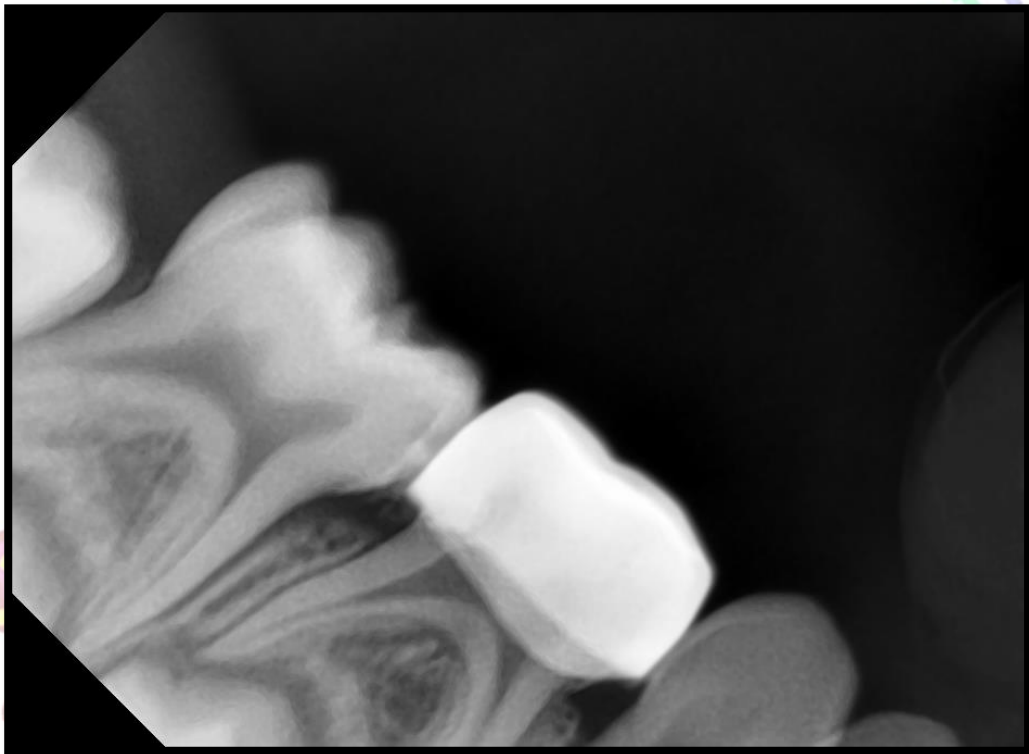
**PRE OPERATIVE 84**



**SEPARATORS (MESIAL & DISTAL)**

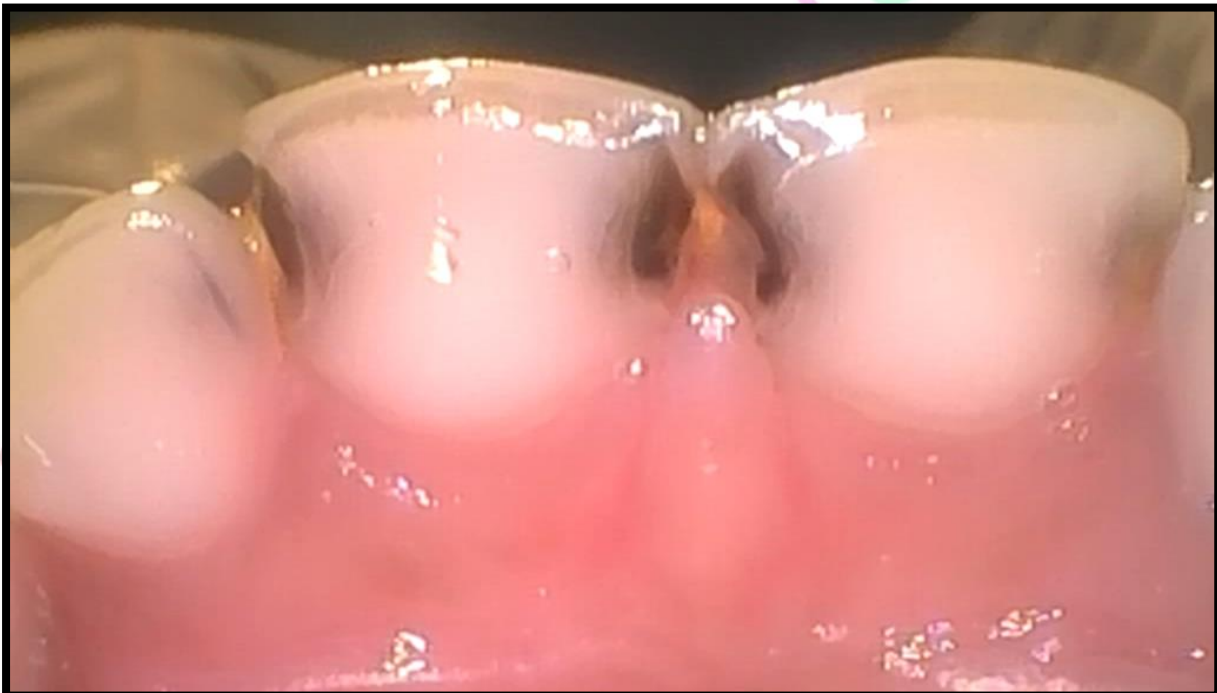


SSC 84



# *Zirconia Crowns*

PRE OPERATIVE 51 61

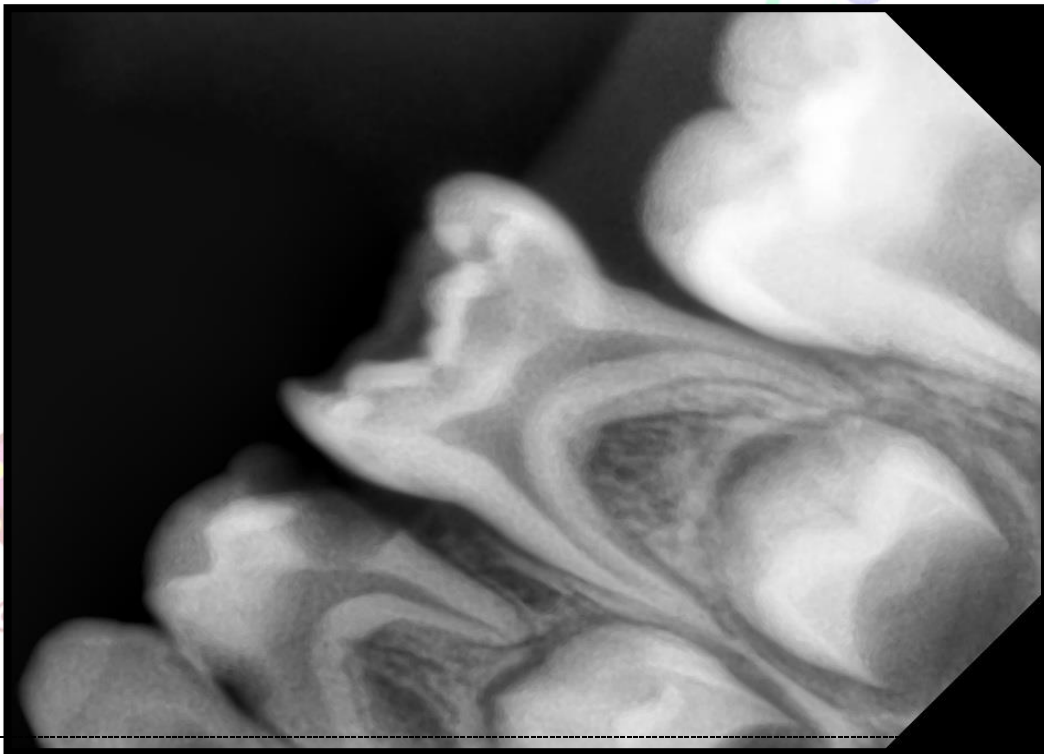


POST OPERATIVE 51 61

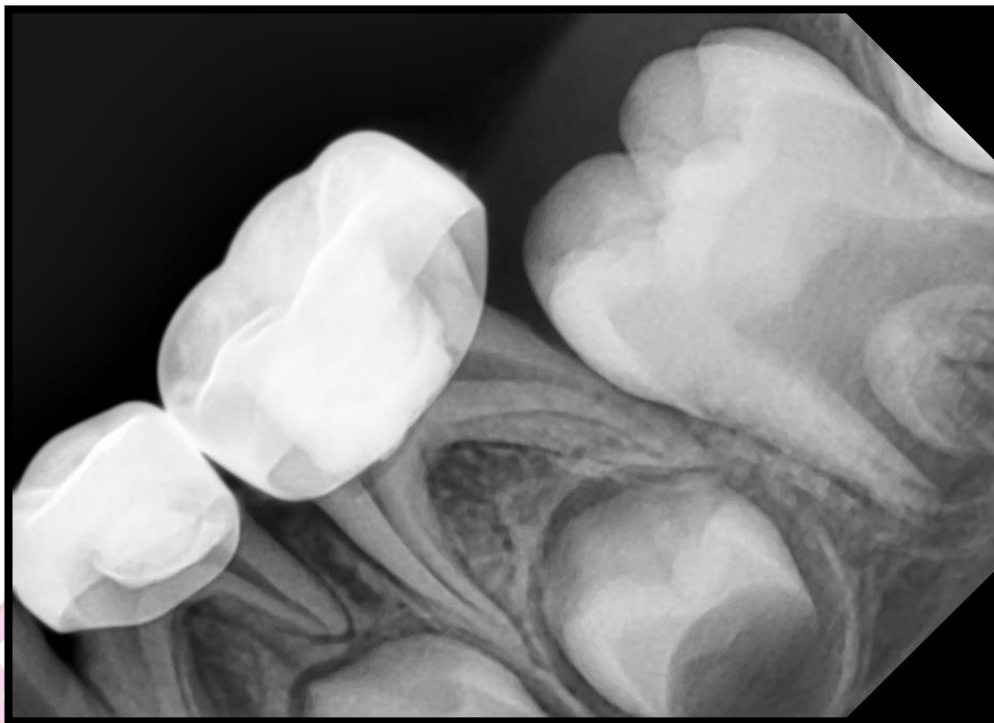
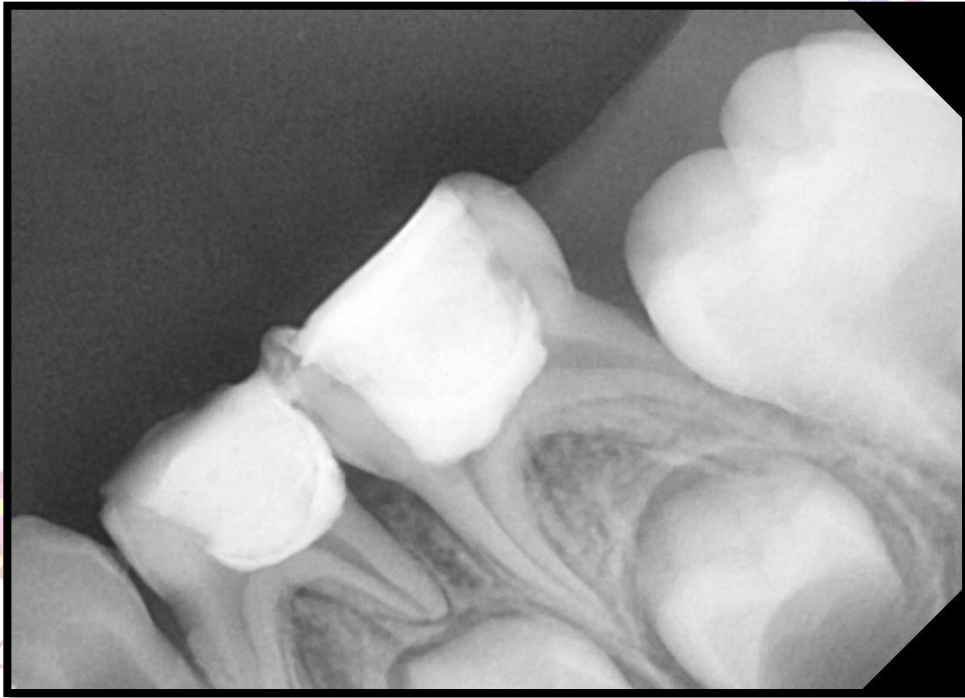


# *Pulpotomy (74 75)*

PRE OPERATIVE 74 75



**POST OPERATIVE 74 75**



# *Pulpectomy 52 51 61 62*

PREOPERATIVE 52 51 61 62



POST OPERATIVE 52 51 61 62



# *Pulpectomy 84*

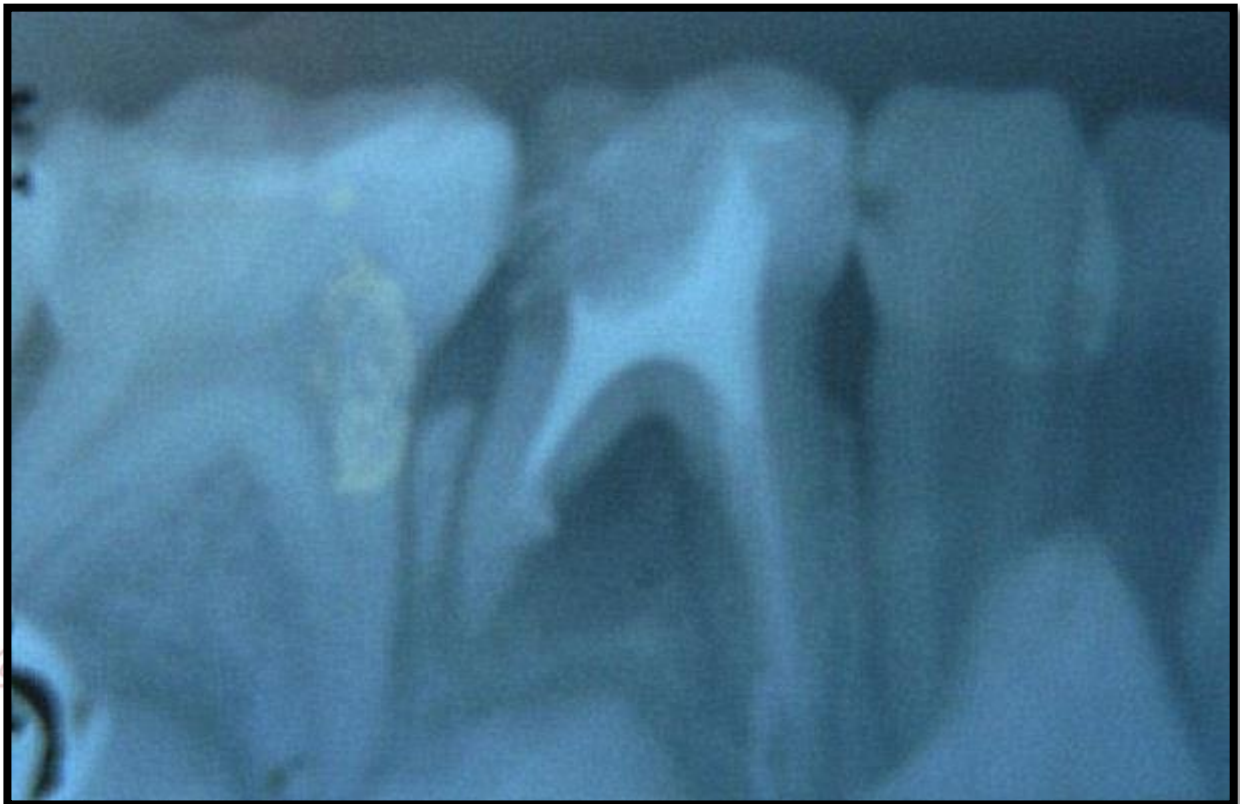
**PRE OPERATIVE 84**



## WORKING LENGTH DETERMINATION 84

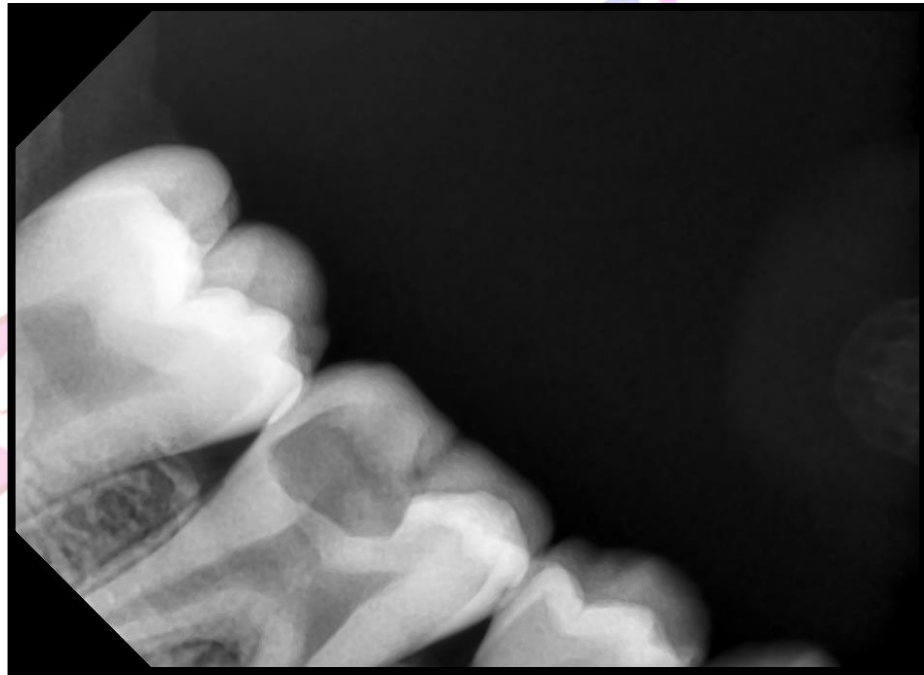


## POST OPERATIVE 84



# *Indirect Pulp Capping*

PRE OPERATIVE 46



## POST OPERATIVE 46



# *MANAGEMENT OF TRAUMATIC DENTAL INJURIES*

- *UNCOMPLICATED CROWN FRACTURE*
- *COMPLICATED CROWN FRACTURE*

# *Uncomplicated Crown Fracture*

**PREOPERATIVE 11 21**



**POST OPERATIVE 21**



POST OPERATIVE 11

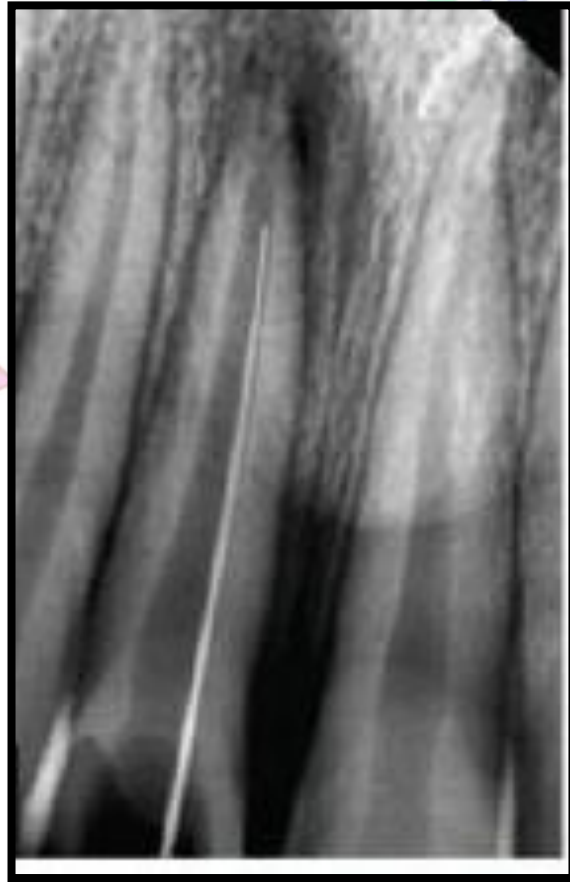


# *Complicated Crown Fracture*

PREOPERATIVE 11



## WORKING LENGTH DETERMINATION



Kidz Dental Centre

**POST OPERATIVE**



**POST OPERATIVE 11**

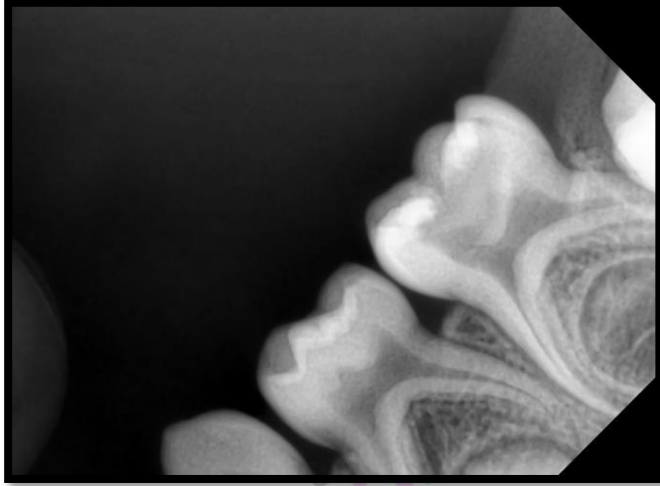


**PRE OPERATIVE 75 & 85**

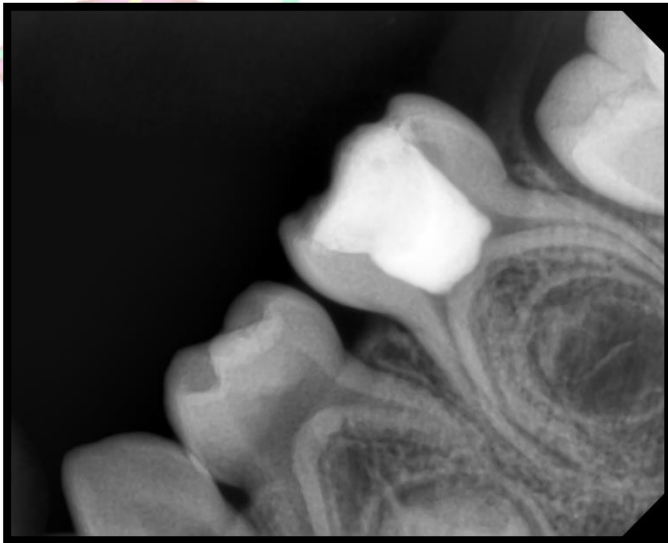


**POST OPERATIVE 75 & 85**

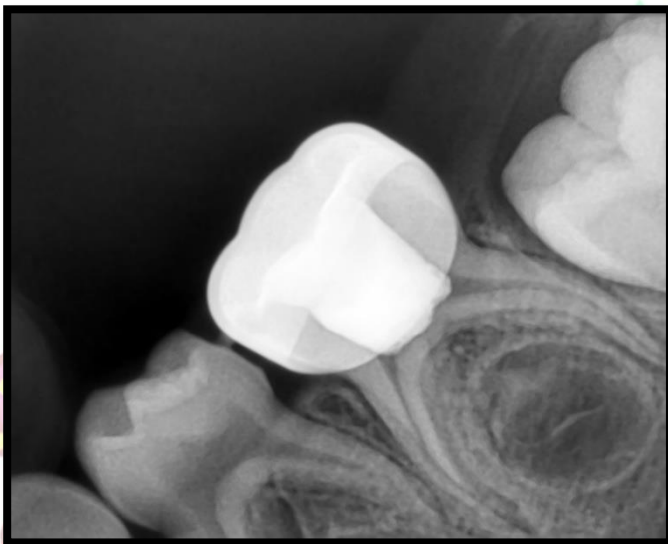




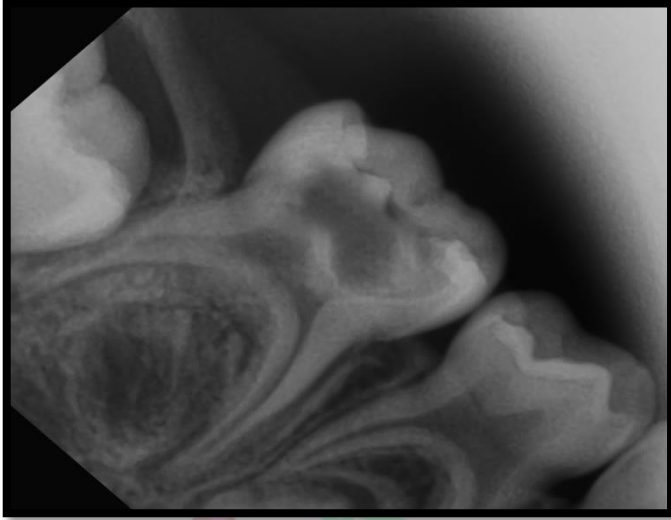
**PRE OPERATIVE 75**



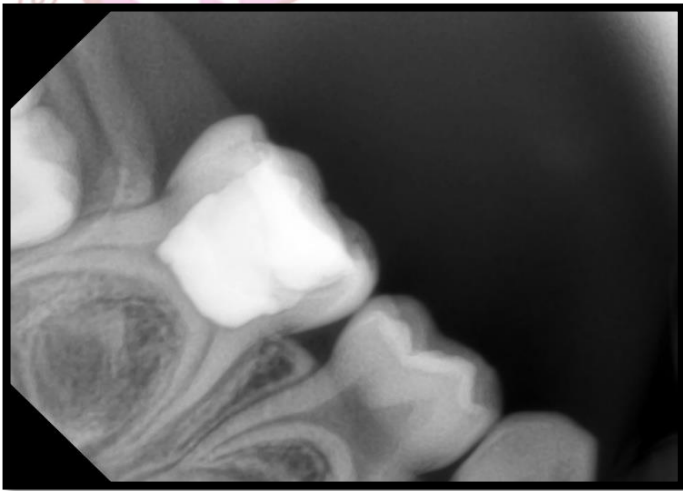
**PULPOTOMY WRT 75**



**SSC WRT 75**



**PRE OPERATIVE 85**



**PULPOTOMY WRT 85**



**SSC WRT 85**